



Welcome

Illinois State Board of Education 21st CCLC New Grantee and New Project Directors meeting

February 28, 2013

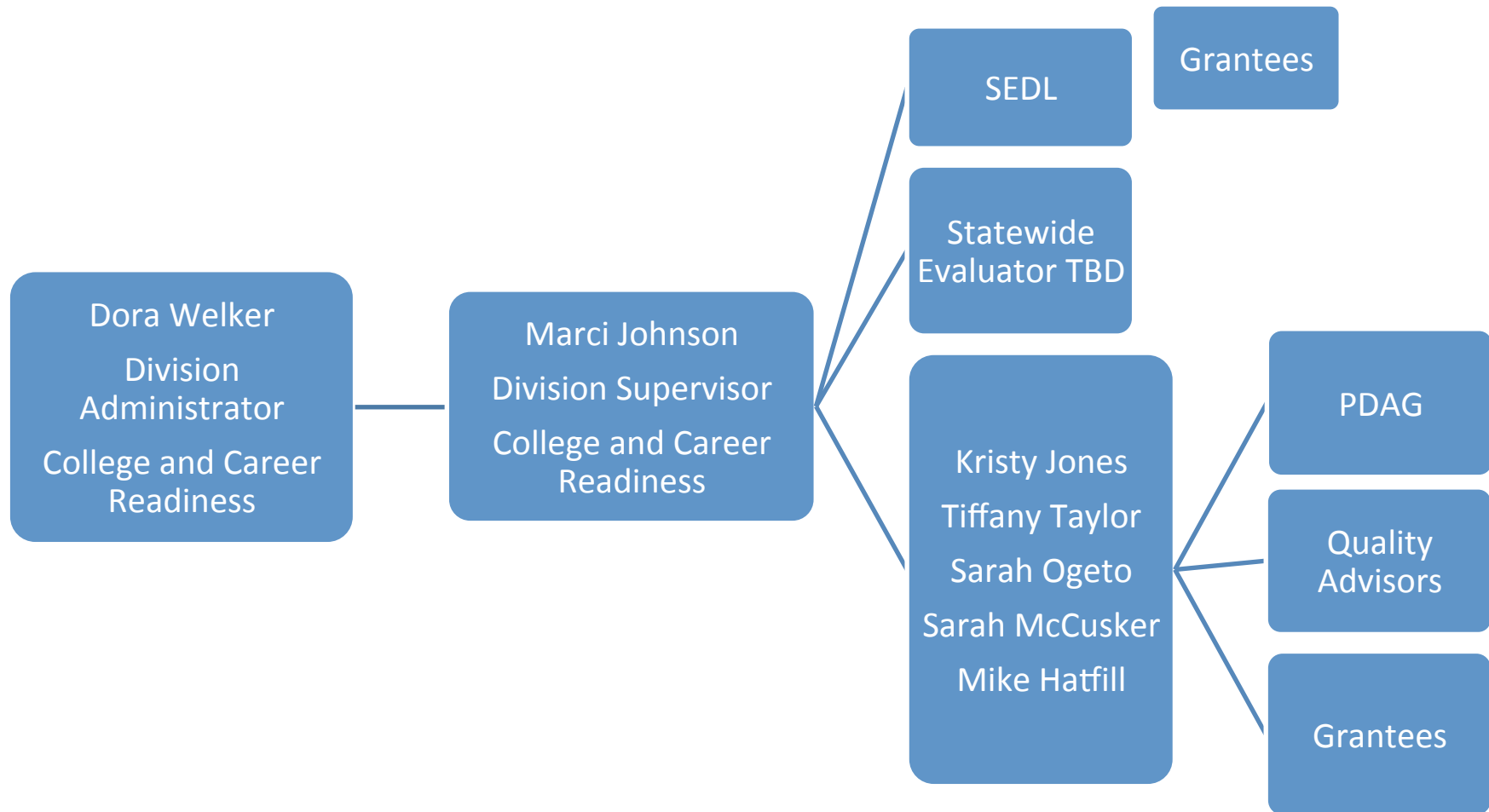
ISBE New Grantee and New Project
Director Meeting

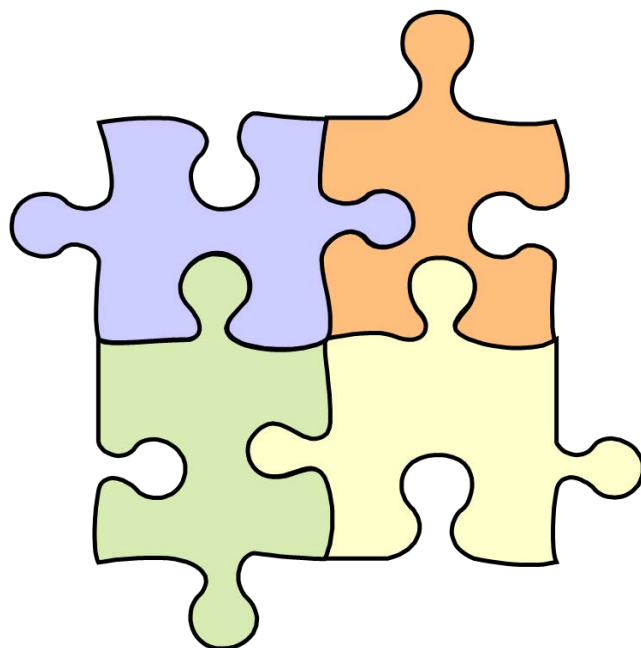
ISBE Staff



- Marci Johnson marjohns@isbe.net
- Kristy Jones kjones@isbe.net
- Tiffany Taylor ttaylor@isbe.net
- Sarah Ogeto sogeto@isbe.net
- Sarah McCusker smccuske@isbe.net
- Mike Hatfill dhatfill@isbe.net
- Contact 217-524-4832

Who's Who at ISBE





ROLES AND RESPONSIBILITIES

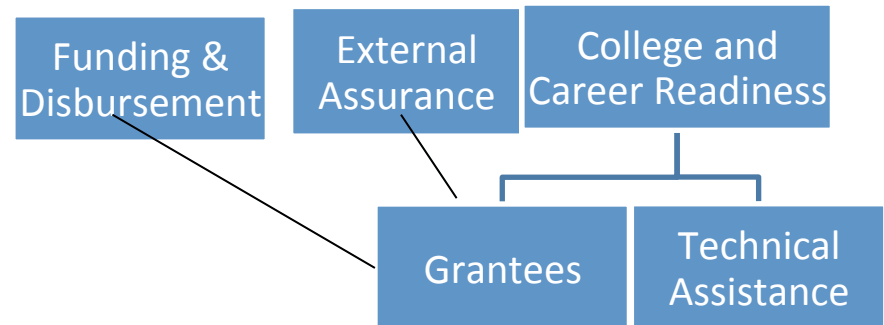


February 28, 2013

ISBE New Grantee and New Project
Director Meeting

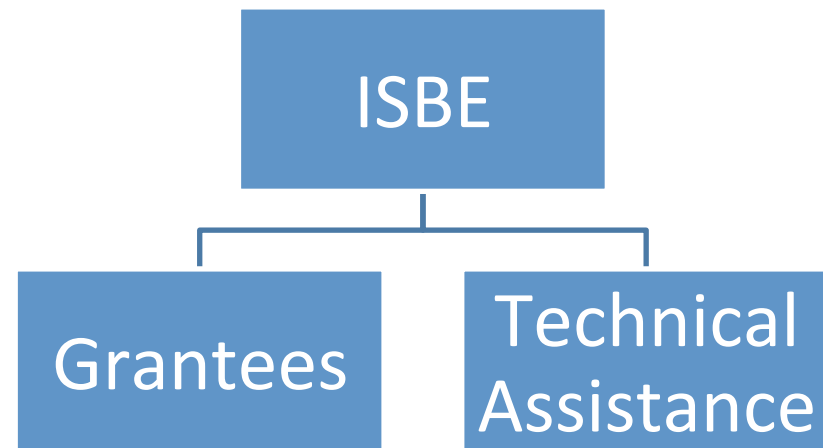
ISBE's Role

- Provides technical assistance to grantee
- Approves grants and continuation applications
- Ensures compliance with state law and guidance
- Conducts monitoring
- Pairs quality advisors and peer mentors with grantees



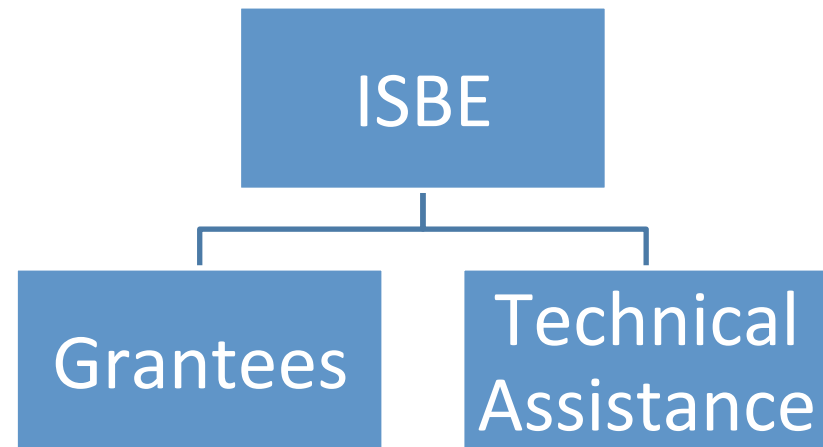
SEDL's Role

- Technical assistance for grantees
- Assist ISBE with quality advisors
- Assist ISBE with conferences



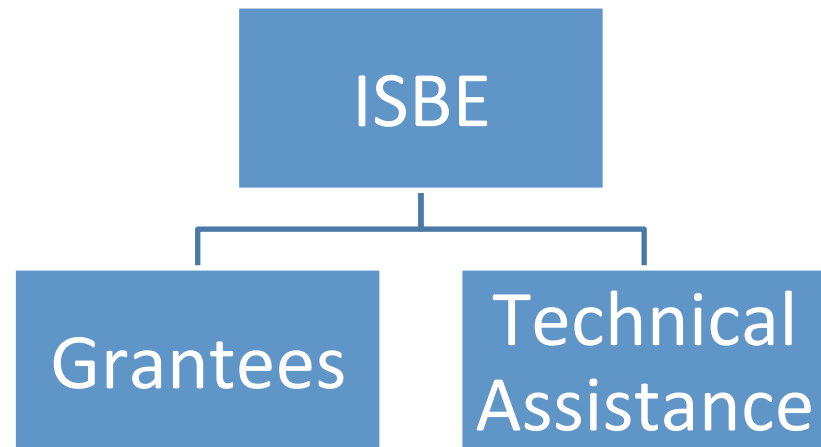
Statewide Evaluator's Role

Evaluates the program for the state



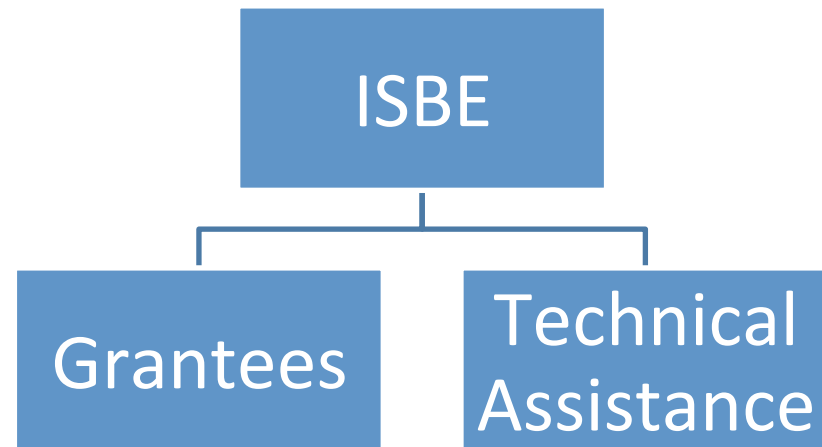
Quality Advisor's Role

- Reviews needs assessment
- Encourages quality programming
- Mentors grantees

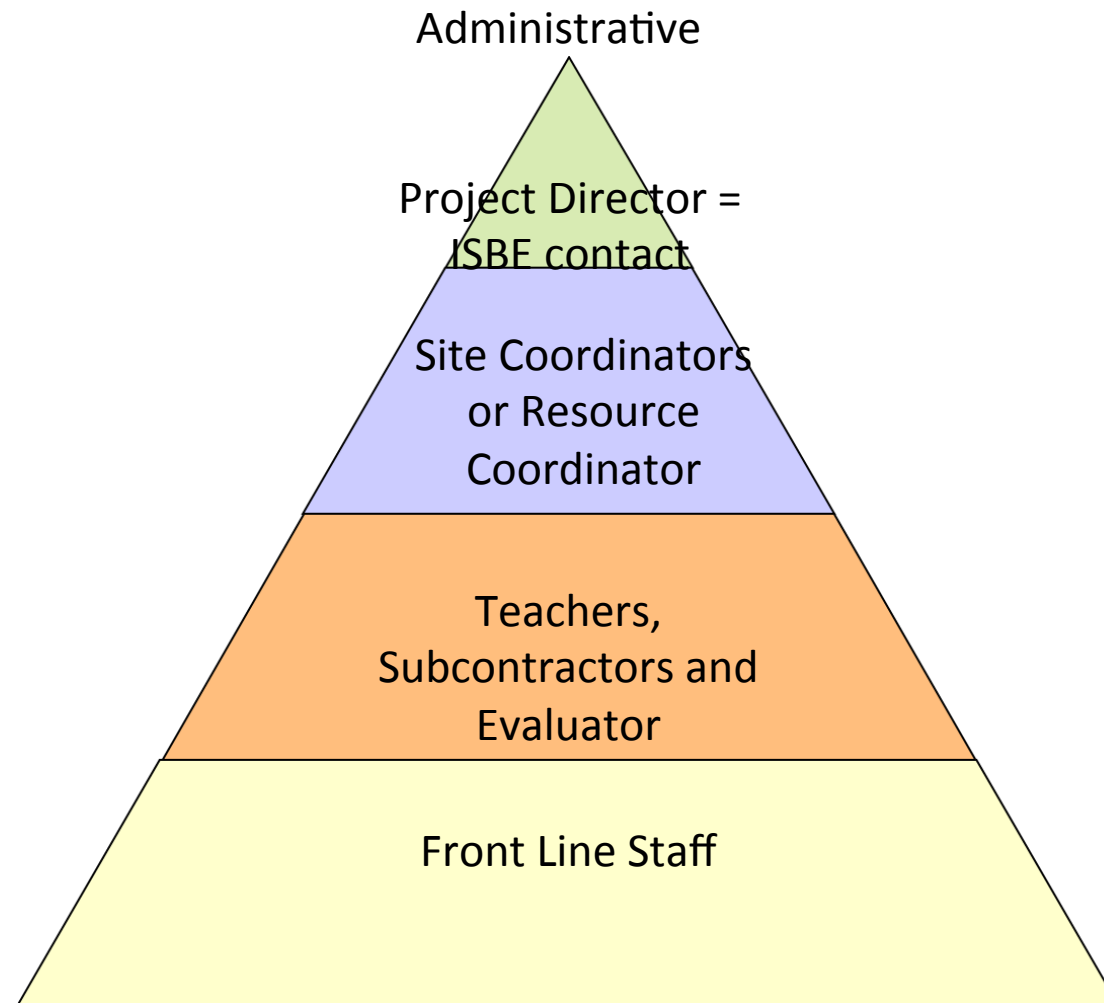


Grantees' Role

- Provide quality programming to assist students in academic achievement and assist families
- Assist schools in achieving academic status
- Follow grant as submitted
- Work with the schools in the application only
- No changes unless approved by ISBE



Grantee Org Chart



February 28, 2013

ISBE New Grantee and New Project
Director Meeting

Role of Project Director

- Contact person for the grant;
- Guarantees funds are spent appropriately
- Oversees the implementation of the grant project with fidelity
- Provides professional development to the staff
- Ensures programming is academically based
- Ensures parent involvement activities are taking place
- Works with the community to market the program

Role of Site Coordinator

- Oversees one specific site, in some cases oversees more than one site
- Follows the direction of the project director
- Assists the project director to be sure the program is in compliance;
- Coordinates the program for a specific site ensuring the students are registered, attendance is kept, data is collected, programs are in place and are academically based, students are safe
- Ensures parent involvement activities are held for the parents of the students enrolled in the program
- Collaborates and communicates with the principal of the school

Role of Front Line Staff

- Works daily with the students and parents
- Provides the academic and enrichment programs
- Ensures the safety of the children
- Assists the students to higher achievement in their studies
- Assists the site coordinator to ensure the program is in compliance

Role of Local Evaluator

- Works with the Project Director to collect data needed to evaluate the program, to provide the data needed for PPICS and fall/spring survey
- Creates an evaluation report due to ISBE by Dec. 1
- Provides recommendations for changes to the program

Additional Roles

- Co-Applicant
- Partner
- Sub Contractor